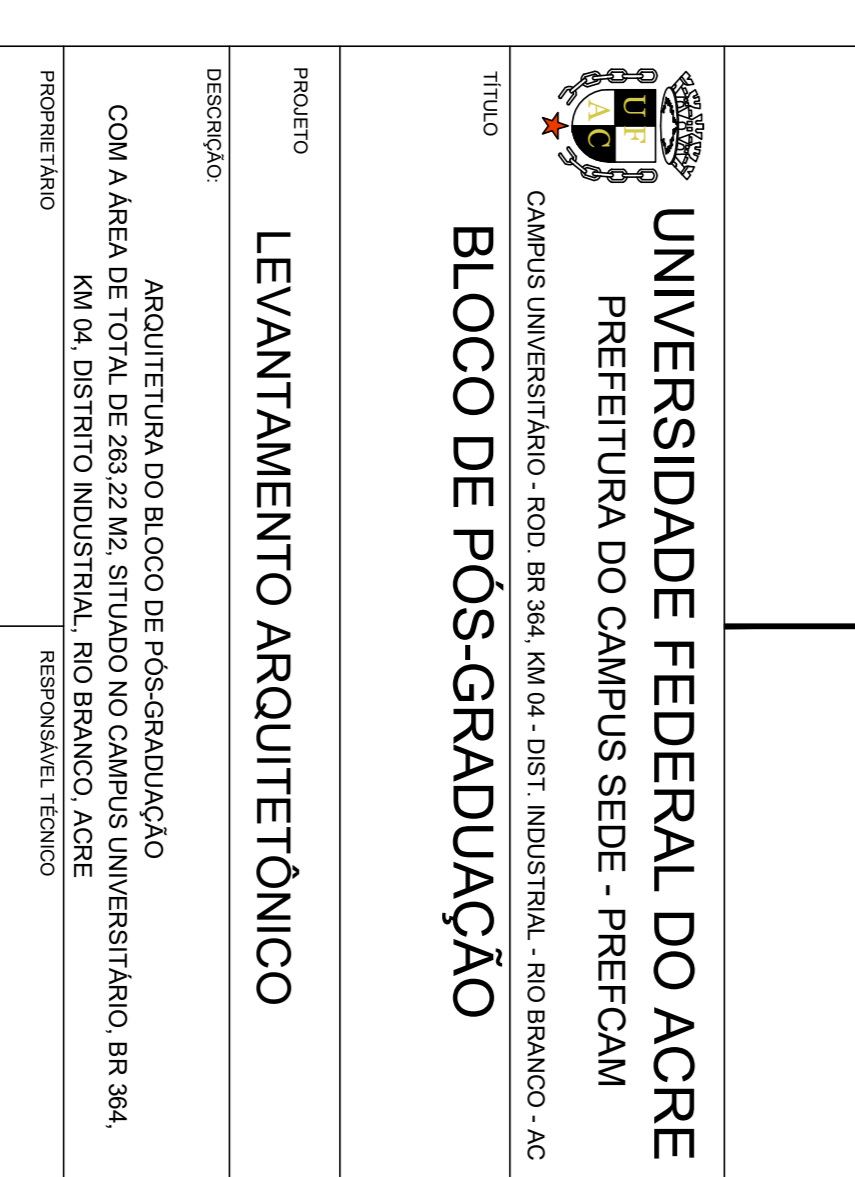
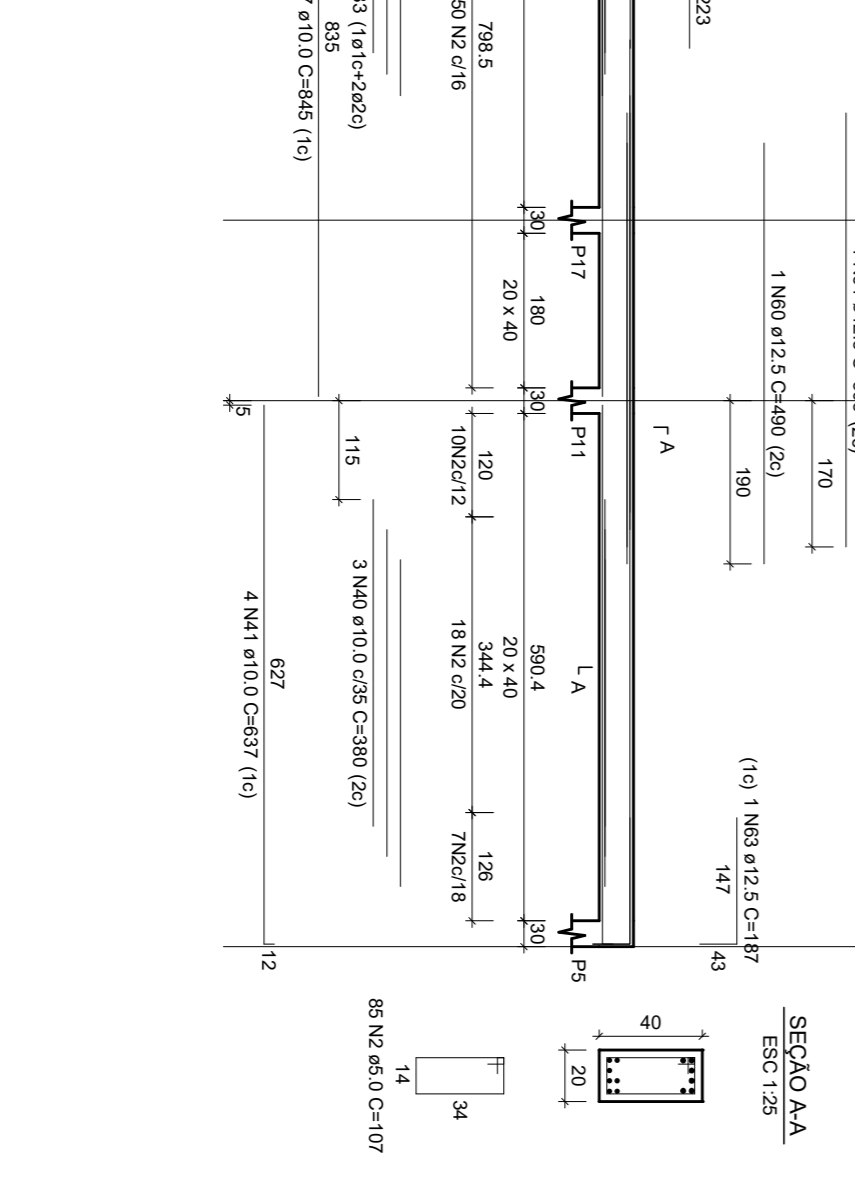
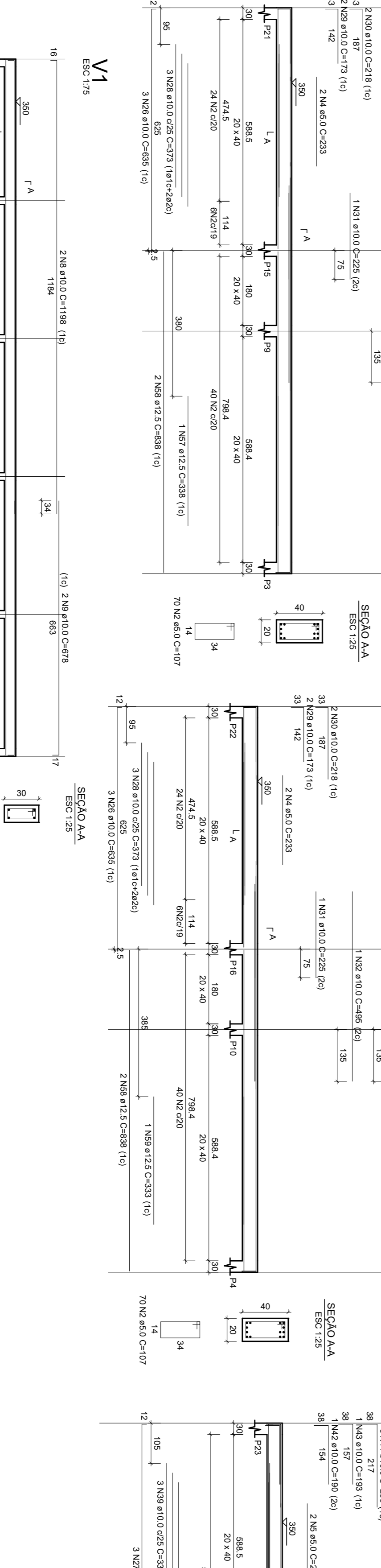
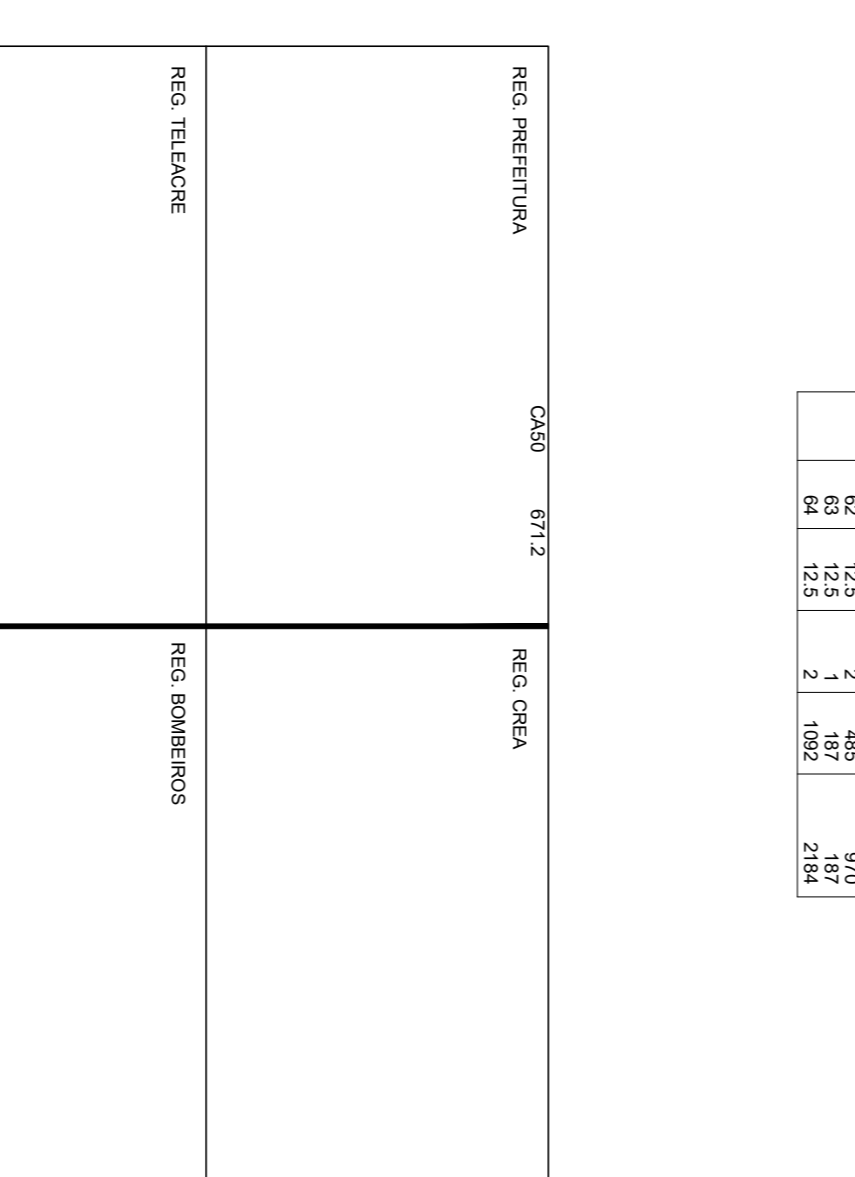
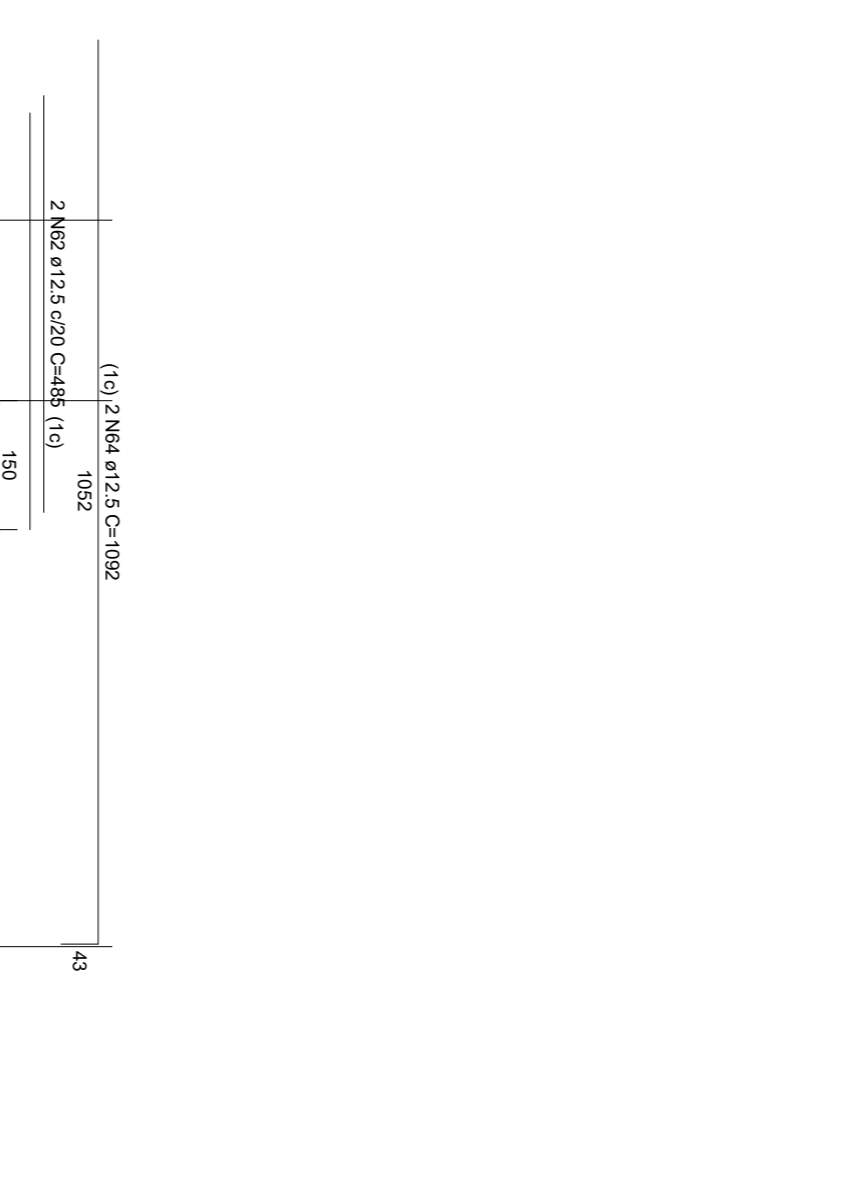
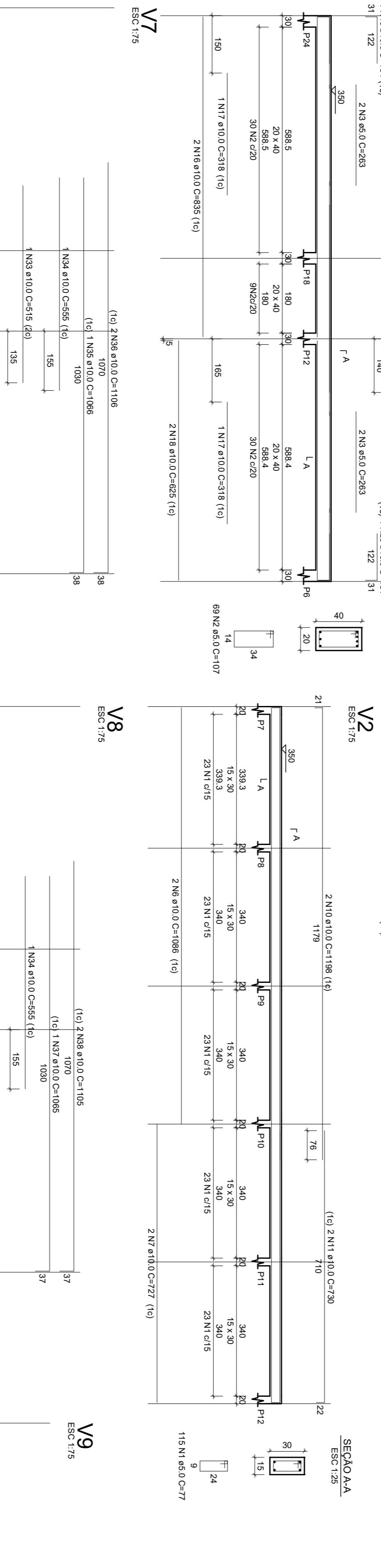
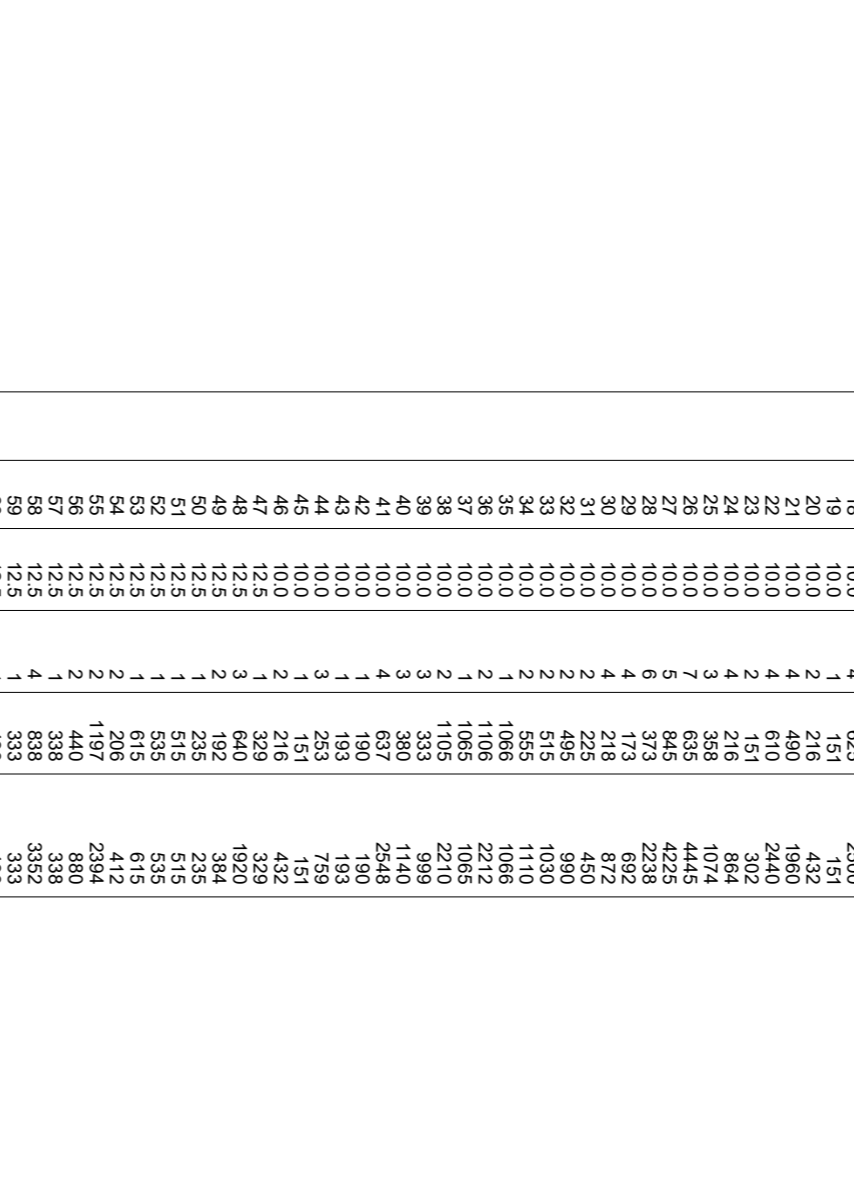
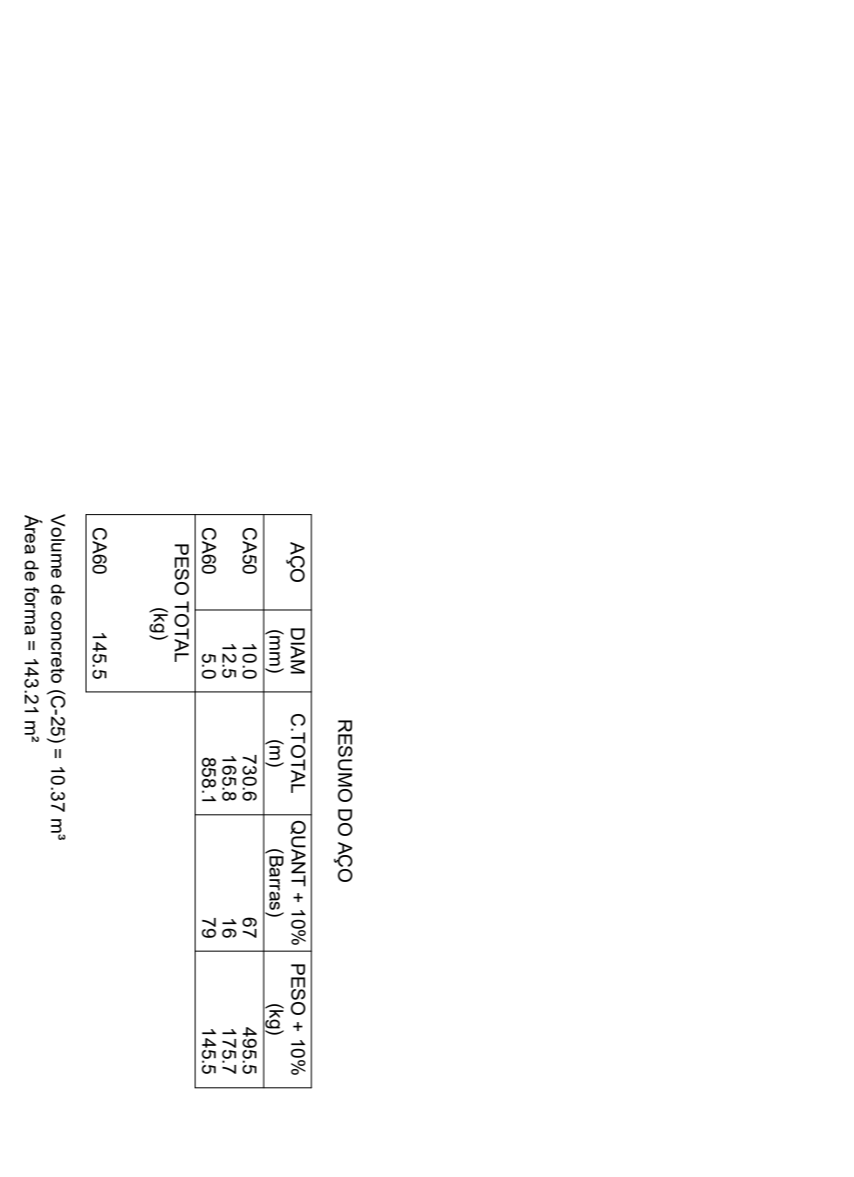
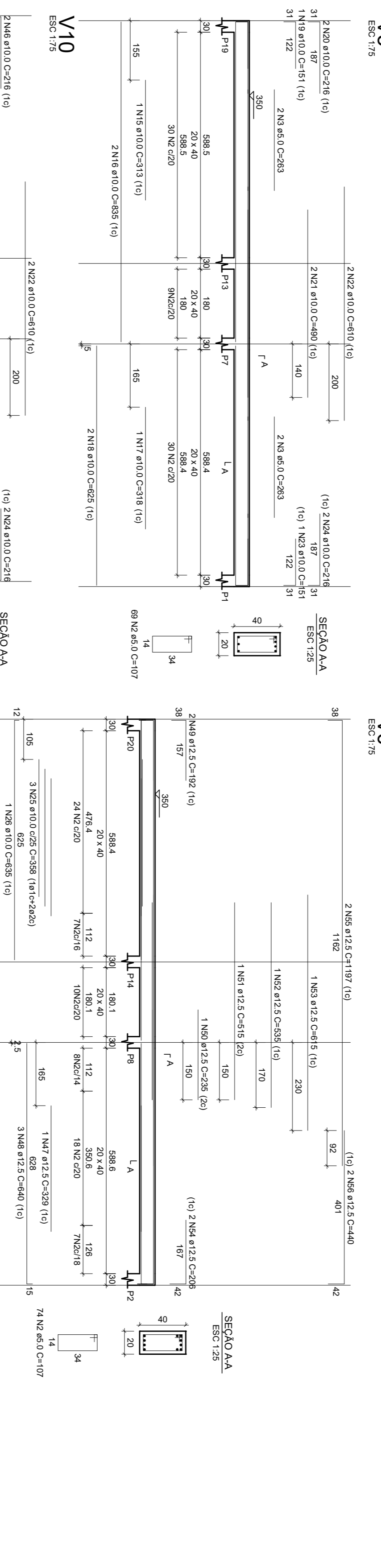


RESUMO DO AÇO

ACO	DIAM (mm)	C TOTAL (m)	QUANT (Barra)	% (Barra)	PREÇO (R\$)	% (R\$)
C400	5,0	1858	67	16	1567	15,7
C450	5,0	8881	79	79	1455	14,5
TOTAL						
ACO	N	DIAM (mm)	QUANT C/UNT	C TOTAL (cm)	C TOTAL (m)	
C400	2	5,0	487	107	46719	7,1
C400	3	5,0	263	2104	46719	7,1
C400	4	5,0	222	446	46719	7,1
C400	5	5,0	188	446	46719	7,1
C400	6	5,0	277	5816	46719	7,1
C400	7	5,0	198	4752	46719	7,1
C400	8	5,0	198	2386	46719	7,1
C400	10	10,0	198	2386	46719	7,1
C400	12	12,0	198	2386	46719	7,1
C400	13	13,0	279	1460	46719	7,1
C400	14	14,0	279	1460	46719	7,1
C400	15	15,0	313	313	46719	7,1
C400	16	16,0	313	313	46719	7,1
C400	17	17,0	313	313	46719	7,1
C400	18	18,0	313	313	46719	7,1
C400	19	19,0	313	313	46719	7,1
C400	20	20,0	313	313	46719	7,1
C400	21	21,0	313	313	46719	7,1
C400	22	22,0	313	313	46719	7,1
C400	23	23,0	313	313	46719	7,1
C400	24	24,0	313	313	46719	7,1
C400	25	25,0	313	313	46719	7,1
C400	26	26,0	313	313	46719	7,1
C400	27	27,0	313	313	46719	7,1
C400	28	28,0	313	313	46719	7,1
C400	29	29,0	313	313	46719	7,1
C400	30	30,0	313	313	46719	7,1
C400	31	31,0	313	313	46719	7,1
C400	32	32,0	313	313	46719	7,1
C400	33	33,0	313	313	46719	7,1
C400	34	34,0	313	313	46719	7,1
C400	35	35,0	313	313	46719	7,1
C400	36	36,0	313	313	46719	7,1
C400	37	37,0	313	313	46719	7,1
C400	38	38,0	313	313	46719	7,1
C400	39	39,0	313	313	46719	7,1
C400	40	40,0	313	313	46719	7,1
C400	41	41,0	313	313	46719	7,1
C400	42	42,0	313	313	46719	7,1
C400	43	43,0	313	313	46719	7,1
C400	44	44,0	313	313	46719	7,1
C400	45	45,0	313	313	46719	7,1
C400	46	46,0	313	313	46719	7,1
C400	47	47,0	313	313	46719	7,1
C400	48	48,0	313	313	46719	7,1
C400	49	49,0	313	313	46719	7,1
C400	50	50,0	313	313	46719	7,1
C400	51	51,0	313	313	46719	7,1
C400	52	52,0	313	313	46719	7,1
C400	53	53,0	313	313	46719	7,1
C400	54	54,0	313	313	46719	7,1
C400	55	55,0	313	313	46719	7,1
C400	56	56,0	313	313	46719	7,1
C400	57	57,0	313	313	46719	7,1
C400	58	58,0	313	313	46719	7,1
C400	59	59,0	313	313	46719	7,1
C400	60	60,0	313	313	46719	7,1
C400	61	61,0	313	313	46719	7,1
C400	62	62,0	313	313	46719	7,1
C400	63	63,0	313	313	46719	7,1
C400	64	64,0	313	313	46719	7,1



REG. PREFERENCIAL	C450	671,2	REG. CREIA
REG. TEL/EACRE			REG. BOMBOMBENS
<p>UNIVERSIDADE FEDERAL DO ACRE PREFEITURA DO CAMPUS SEDE - PREFCAM</p> <p>CAMPUS UNIVERSITARIO - ROD BR 364, KM 04 - DIST INDUSTRIAL - RIO BRANCO - AC</p> <p>BLOCO DE PÓS-GRADUAÇÃO</p>			
<p>PROJETO LEVANTAMENTO ARQUITETÔNICO</p>			
<p>DESCRIÇÃO ARQUITETURA DO BLOCO DE PÓS-GRADUAÇÃO COM A ÁREA DE TOTAL DE 263,22 M2, SITUADO NO CAMPUS UNIVERSITARIO, BR 364, KM 04, DISTRITO INDUSTRIAL, RIO BRANCO, ACRE</p>			
PROPRIETÁRIO	FUNDAÇÃO DE APOIO E DESENVOLVIMENTO DE ENSINO, FUNDACIA DE APOIO E DESENVOLVIMENTO DE ENSINO, FUNDACIA		RESPONSÁVEL TÉCNICO
PROPRIETÁRIO	JOSÉ GUILHERME COSTA DA SILVA PRESIDENTE CNPJ 07.172.000/0001-00		JOSÉ GUILHERME COSTA DA SILVA PRESIDENTE CNPJ 07.172.000/0001-00
ÁREA	BLOCO - 263,22 m²	CONTÊDOR	ARM. DAS DAS VIGAS DO NÍVEL 500
LOCAL	RIO BRANCO - AC	DATA	JUNHO 2022
ESCALA		INDICADA	